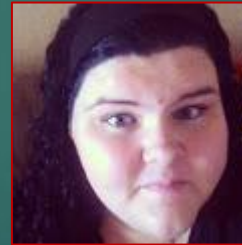
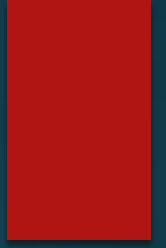


The Struggles of Language Barriers



Populations Affected



WHO?



A refugee is, “One who flees, especially to another country, seeking refuge from war, political oppression, religious persecution, or a natural disaster,” (Refugee, 2011).

Since 1979, the United States has welcomed over a half a million annually Refugees desiring to settle in the United States (Refugee, 2011).

Language Barriers

- One of the number one problems
- It affects their entire life, how they get a job, their health, and communication as a whole.
- 65.2% of refugees reported that the biggest barrier when dealing with healthcare, was the language (Navuluri and all, 2014).
- decrease in access to healthcare, poor understanding of instructions or medication, increased risk of misdiagnosis, longer hospital stays, etc (Diamond and Jacobs, 2011).

-Abdelkerim and Grace (2012) state that speediness of learning English is unrealistic and demanding.



Prevalence



Language is a very frustrating barrier into integration of immigrants or refugees, it takes time and patience, and a lot of practice to achieve fluency in any language.

These candidates will more than likely follow the status of unemployed or become amateurish workers
Abdelkerim and Grace (2012).

- 1) Communication
- 2) Health
- 3) Employment

Services

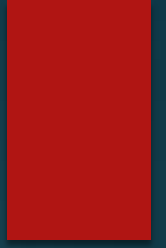
Case workers in different departments collaborate together in meeting the needs of the refugees. Language and education is the center of all services rendered (Catholic Charities. 2011).

Mosaic Family Services is a combination of bilingual case managers from over 25 languages.

World Relief's main concentration of the refugees is the Burmese, Bhutanese, Afghanis, Congolese, and Iraqis. World Relief teach and tutor ESL during the 90 day contractual period.



Organization



International Newcomer Academy

- it is Language Center
program for middle and high
school immigrant students

-There are 24 languages spoken
at the INA

-The mission statement for the INA is “To
engage English Language Learners in rigorous
learning experience that develop responsible,
productive, and contributing citizens in a diverse
society” (International Newcomer Academy
2012)



Group Plan

-Most refugees coming into the U.S. have encountered discrimination and oppression at some time (Mayadas & Segal, p.565).

When a refugee enters the U.S. English is normally not their first language. For refugees learning English can ultimately make their lives in the U.S. much easier, it can open the doors to education and economic opportunity.

So our plan...

. The Tarleton Social Work, Group A's plan is to conduct more research to this issue

- After research this semester it is definitely shown that language barriers do need to be addressed

- The groups' future grant that they are to write will go towards to helping to improve Refugees English learning. It is not yet known what organization that this grant could benefit or the specifications it will have.



Thank You!

**If you ever get the chance to
Help a Refugee then do it!**

